

Software Excellence for Over 20 Years

Rimpo and Associates specialties include:

Microsoft Silverlight Specialist

Rich Internet Applications (RIA) development is the hot industry buzzword and Microsoft's Silverlight brings that excitement to business applications. RIA is no longer just for flashy websites, it now can be used to give business applications the pizzazz and sparkle they deserve.

SQL Server, WCF, Linq Solutions

Moving data from backend databases, across the wire and handled expertly at the application level has never been easier thanks to Windows Communication Foundation and Linq. Service Oriented Applications can now be developed using these industry standard procedures and tools.

Plug-In, Module Designs

The Smart Client composite application design framework first introduced for Windows Forms development (CAB) has now been revamped for the WPF and Silverlight arena (Prism). These frameworks provide the core for scalable, plug-in applications.

Rimpo and Associates, Inc. offers a full range of software consulting, design and project development services. We specialize in highly technical, data intensive software, designed with robust and easy to navigate user interfaces.

FOR MORE INFORMATION:
www.rimpoandassociates.com

Rimpo and Associates Inc.

Software Solutions

CUSTOMIZED
ENVIRONMENTAL &
ENERGY SOFTWARE

Rimpo and Associates, Inc.

6097 Garden Towne Way
Orangevale, CA 95662
Phone: 916-813-9766 | jrimpo@rimpoandassociates.com

Proven Solutions Robust Software

Rimpo and Associates, Inc.

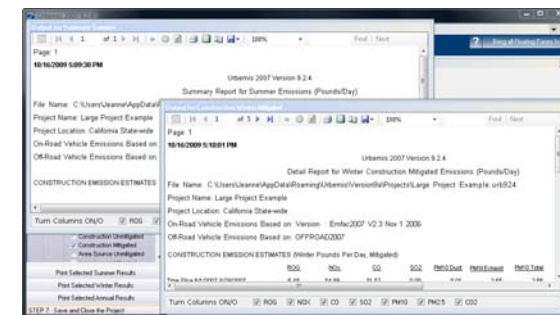
Bay Area Silverlight Charting Application



Pollutant Threshold Modeling

The Bay Area Air Quality Management District needed data and software to assist them in setting regulations for greenhouse gas emissions. Rimpo and Associates designed and developed a SQL Server database, populated it with data from the CEQANet data repository and made 19,212 runs of Urbemis (all fully automated). Due to the large quantity of data, displaying the results was a challenge. Rimpo and Associates designed and wrote a Silverlight 2 application that lets the user select specific subsets of the dataset to be viewed. The application also provides statistics about the projects that fall below or above a threshold value. A separate Silverlight 2 application allows the Bay Area to add new projects to the database and to make the necessary Urbemis model runs.

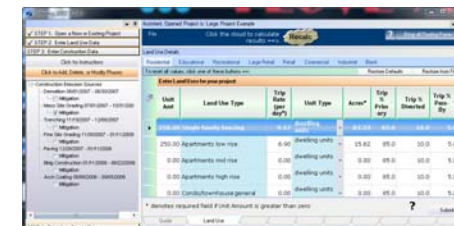
Urbemis Floating Panel Example



Urbemis C#, CAB, Plug-In Module Software

Urbemis is written in C# using Microsoft's Composite UI Application Block (CAB) and Infragistics' Winform controls. The reports are generated with Reporting Services and can be exported to Excel spreadsheets or .pdf files. The program is used in all California air districts and by numerous consultants, cities, and counties. It is also taught at several universities in California.

Urbemis Data Entry Screenshot



Additional Solutions

For over five years, Rimpo and Associates wrote and maintained the Admissions and Student Records software for the UCD School of Medicine.

Additional clients have included Bonneville Power Administration, The Northwest Power and Conservation Council and The Gas Research Institute.

Urbemis SOA Example

Urbemis is a Windows Form application. However due to the module design of the application, Urbemis calculations can be made from outside of the Windows Form system. On the urbemis.com website, Rimpo and Associates provides a simple service call example that demonstrates how this can be done. This module design allows Urbemis to be embedded in a sequence of models, or as the backend "workhorse" for a variety of environmental analyses.

www.urbemis.com



Visit www.rimpoandassociates.com for additional information.